

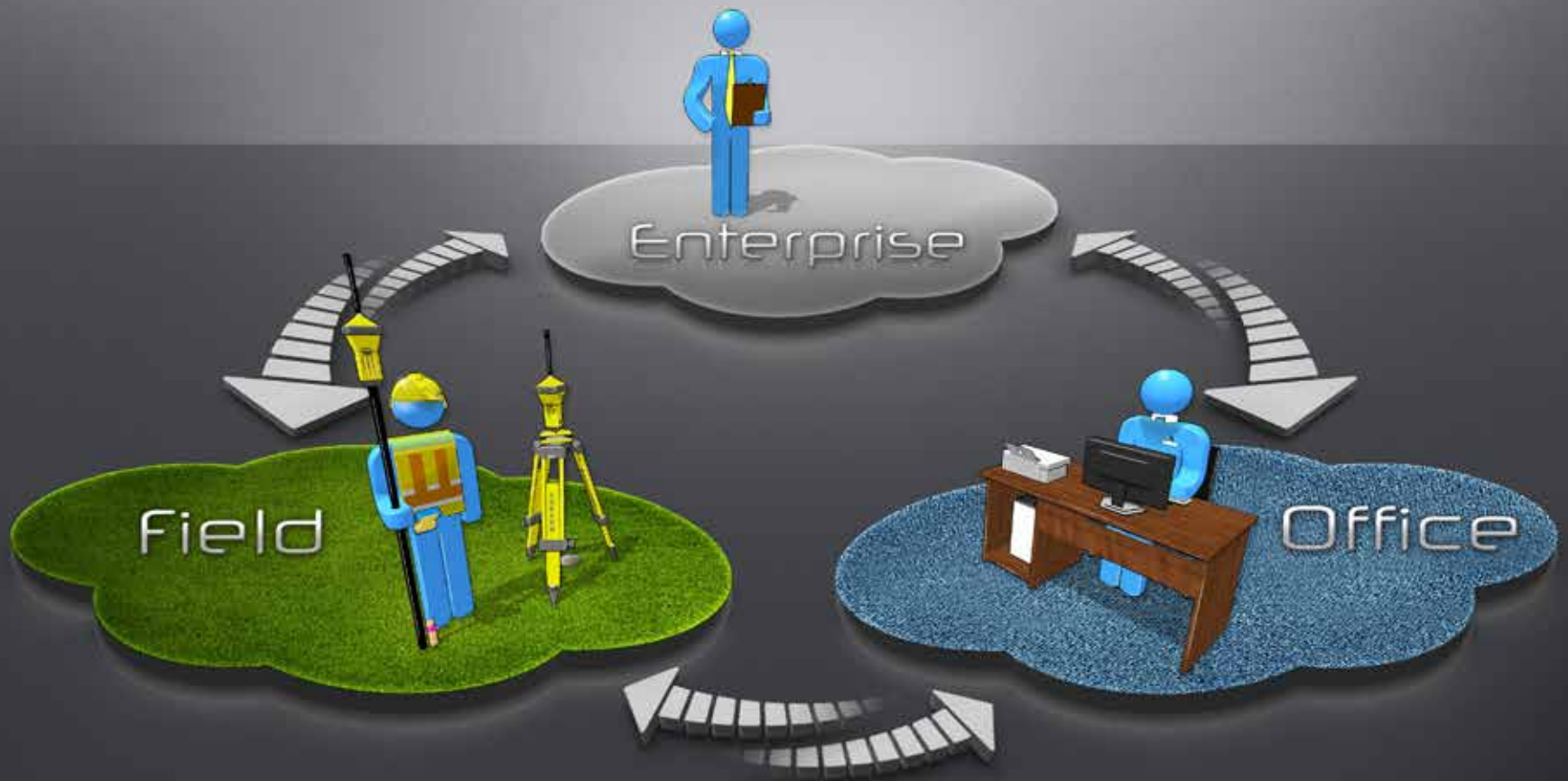
MAGNET™



Field and Office.
Connected.

 **DICARLO**
SALES - SUPPLIES - REPAIRS - RENTALS
www.dicarlotech.com
410-749-0112

MAGNET™



**INCREASED
PRODUCTIVITY**

The software solution that streamlines data workflow for surveyors, contractors, engineers and mapping professionals.

MAGNET™ Field



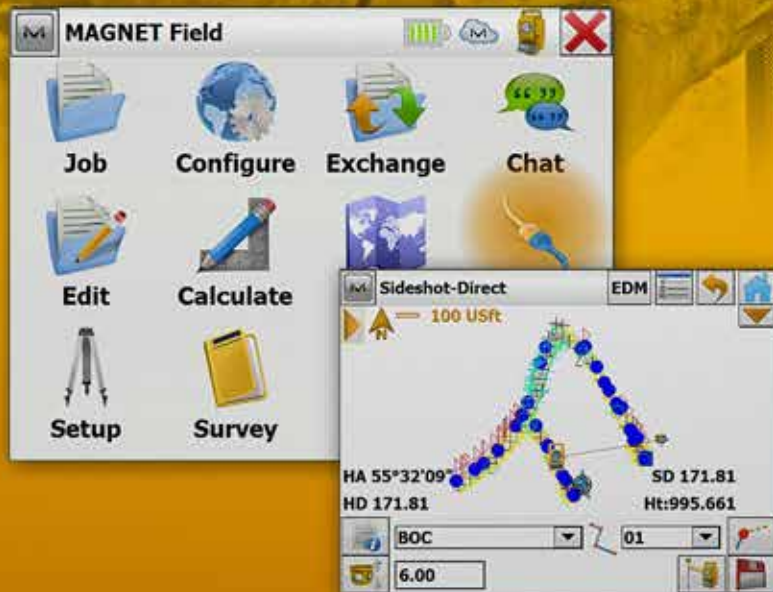
MAGNET Field is a powerful and intuitive field application software that enables users to collect survey mapping data and perform construction and road layout using total stations, levels, and GPS.

MAGNET Field contains all available functionality and instrument drivers. It is intended for the surveying and geomatics users who demand a wide range of functions.

MAGNET Field Site is a customized version of MAGNET Field for construction job site activities such as stakeout, grade checking to surfaces, volume estimates, and roading.

MAGNET Field Layout is a customized version of MAGNET Field that increases building layout productivity. With in-the-field plans and dimensional entry, you can go from paper plan to building layout faster than ever.

MAGNET Mobile Exchange is a free utility that connects to MAGNET Enterprise. Exchange any kind of file with the office.



*“MAGNET Field
saves me time,
and I get
home earlier!”*

Available Modules

DESCRIPTION	PART #	OPTICAL	ROBOTICS	GPS (INCLUDES mmGPS)	HYBRID	ROADS	FIELD PRODUCT MAINTENANCE (12 MONTH)	ENTERPRISE TEAM MODULE (12 MONTH)
Field	61056	•					•	
Field + Roads	61057	•				•	•	
Field + Robotics	61058	•	•				•	
Field + Robotics + Roads	61059	•	•			•	•	
Field + Robotics + GPS	61164	•	•	•			•	
Field GPS	61060			•			•	
Field GPS + Roads	61061			•		•	•	
Field + GPS + Optical	61062	•		•			•	
Field + GPS + Optical + Roads	61063	•		•		•	•	
Field + GPS + Robotics + Roads	61064	•	•	•		•	•	
Field + Robotics + Roads + Hybrid Positioning	1002833-01	•	•		•	•	•	
Field + Robotics + Hybrid Positioning	1002834-01	•	•		•		•	
Field + Robotics + GPS + Hybrid Positioning	1002835-01	•	•	•	•		•	
Field Complete (All Modules)	1002832-01	•	•	•	•	•	•	
Field Solution 12 months	61065	•	•	•	•	•	•	•
Field Solution Renewal 12 months	1002771-01	•	•	•	•	•	•	•
Trade Up to Field Solution 12 months (from TopSURV)	61066	•	•	•	•	•	•	•
Upgrade to Field Solution 12 months (from Field)	61158	•	•	•	•	•	•	•
Field Product Maintenance 12 months	61155						•	
Field Site	1001628-01	•	•	•		•	•	
Field Site + Hybrid Positioning	1002837-01	•	•	•	•	•	•	
Field Site Solution	1001629-01	•	•	•	•	•	•	•
Field Site Solution Renewal 12 months	1002772-01	•	•	•	•	•	•	•
Upgrade to Field Site Solution (from Field Site)	1003009-01	•	•	•	•	•	•	•
Field Site Maintenance 12 months	1001626-01						•	
Field Layout	1002701-01	•	•	•*	•			
Field Layout + Hybrid Positioning	1002836-01	•	•	•*	•			
Field Layout Solution	1002702-01	•	•	•*	•		•	•
Field Layout Solution Renewal 12 months	1002773-01	•	•	•*	•		•	•
Trade Up to Field Layout Solution (from Topcon Layout)	1002703-01	•	•	•*	•		•	•
Upgrade to Field Layout Solution (from Field Layout)	1003010-01	•	•	•*	•		•	•
Field Layout Maintenance	1002700-01						•	
Add-on Optical Module	61083	•						
Add-on Robotics Module	61085		•					
Add-on GPS Module (Includes mmGPS)	61086			•				
Add-on Hybrid Positioning Module	1002831-01				•			
Add-on Roads Module	61087					•		

* HiPer SR RTK Only

Field Modules Compared

FEATURE / FUNCTION	FIELD	FIELD + ROADS	FIELD + ROADS + ROBOTICS	FIELD + ROADS + GPS	FIELD + ROADS + ROBOTICS + GPS	FIELD + ROADS + ROBOTICS + GPS + HYBRID	FIELD COMPLETE	FIELD SOLUTION
Conventional Total Station Drivers	•	•	•	•	•	•	•	•
Internal NMEA GPS Drivers	•	•	•	•	•	•	•	•
Topcon & Sokkia Robotics Drivers			•		•	•	•	•
Topcon & Sokkia GNSS Drivers				•	•	•	•	•
Exchange with MAGNET Enterprise	•	•	•	•	•	•	•	•
Exchange with SiteLink3D	•	•	•	•	•	•	•	•
IS Live Video Driver			•		•	•	•	•
Hybrid Switch						•	•	•
Hybrid Resection						•	•	•
Hybrid Lock						•	•	•
Roads - Roads		•	•	•	•	•	•	•
Roads - Horizontal Alignments		•	•	•	•	•	•	•
Roads - Vertical Alignments		•	•	•	•	•	•	•
Roads - Templates		•	•	•	•	•	•	•
Roads - Cross Sections		•	•	•	•	•	•	•
Roads - String Sets		•	•	•	•	•	•	•
Topo - Collect GPS Static Data	•	•	•	•	•	•	•	•
Auto-Topo			•	•	•	•	•	•

Field Versions Compared

FEATURE / FUNCTION	FIELD	FIELD SOLUTION	FIELD LAYOUT	FIELD LAYOUT SOLUTION	FIELD SITE	FIELD SITE SOLUTION
Maintenance (first 12 months)	•	•	•	•	•	•
Data storage in Enterprise		•		•		•
Conventional Total Station Drivers	•	•	•	•	•	•
Internal NMEA GPS Drivers	•	•	•	•	•	•
Topcon & Sokkia Robotics Drivers	with robotic module	•	•	•	•	•
Topcon & Sokkia GNSS Drivers	with GPS module	•	HiPer SR only	HiPer SR only	•	•
mmGPS Drivers	•	•	•	•	•	•
Hybrid Switch	with Hybrid module	•	with Hybrid module	•	with Hybrid module	•
Hybrid Resection	with Hybrid module	•	with Hybrid module	•	with Hybrid module	•
Exchange with MAGNET Enterprise	•	•	•	•	•	•
Exchange with Sitelink3D	•	•	•	•	•	•
IS Live Video Driver	with robotic module	•	•	•	•	•
Cut/Fill Bar	•	•	•	•	•	•
Plan Entry	•	•	•	•	•	•
Geodetic Coordinates Ability	•	•	•	•	•	•

MAGNET™ Enterprise

The screenshot displays the MAGNET Enterprise web application interface. The interface is dark-themed and includes a top navigation bar with the MAGNET logo and user name 'Jason Hallett'. The main area is divided into several panels:

- Map:** A central map showing a field with pink and green overlays. A sidebar on the left lists 'Dealers' and 'TopNET Networks' across various states.
- Chat:** A chat window on the right showing a conversation with 'Morgan Smith'.
- Data Manager:** A panel listing field data entries, including 'Office Langbein', 'Scott Langbein', and 'Field Langbein' with details like 'Type: mfg' and 'From: Scott Langbein'.
- Clock:** A panel showing the time '08:57:29' and 'Pacific Time (US & Canada) 2011-09-15'.
- Asset Manager:** A panel showing 'Online devices: 0', 'Offline devices: 2', and 'Total devices: 2'.
- To Do List:** A panel with a task 'Morgan: Set stakes for Lot 5 PL' due on '2011-09-15'.
- Weather:** A panel at the bottom left showing '77°' and a 4-day forecast.

MAGNET Enterprise is a web browser-based environment that simplifies managing field and office data in the cloud. Track assets and communicate with everyone involved on your projects. Login from any browser for live updates. Save time and collaborate.

MAGNET Enterprise Features:

- Web browser access
- Map view of field data
- Live data exchange
- Data secure backup
- Chat and communicate to-do items



“We are getting projects done faster and with fewer conflicts because MAGNET Enterprise connects my field and office guys.”

MAGNET™ Enterprise



Enterprise Online Store

AVAILABLE ONLINE AND THROUGH MAGNET DEALERS

PART #

Enterprise Project Team Module 12 months*

61082

Enterprise Project Team Module 12 months Renewal

1002778-01

AVAILABLE ONLINE ONLY (MAGNET-ENTERPRISE.COM)

Enterprise Project Team Module 12 months (billed monthly)

5GB MAGNET Cloud Storage 12 months**

5GB MAGNET Cloud Storage 12 months (billed monthly)

MAGNET Relay 12 months (billed monthly)

MAGNET Relay 12 months (month to month)

* Enterprise Project Team Module: A license to sign into a company account and use the data storage. One simultaneous sign in per purchase. Team modules can not be combined for additional data storage. Additional storage needs to be purchased.

** Additional 5GB data storage: Can be purchased and added to a company account.

MAGNET Mobile Exchange and MAGNET Enterprise is the perfect pairing for exchanging files between the office and the field. No matter what data collection software is used in the field MAGNET Mobile Exchange is a free utility to exchange files back to the office.

Relay Service



MAGNET Relay is a GNSS correction service hosted by MAGNET Enterprise. Subscribers connect a base receiver to the MAGNET Relay service via cellular connection, making the base available for up to 10 rovers.

MAGNET Relay Features:

- Cellular base to rovers
- Extend RTK base/rover range
- Low cost monthly subscription service
- Only requires cellular coverage
- 10 rovers from a single base

Enterprise Mobile



MAGNET Enterprise Mobile is a planning and project tracking application for Android and iPad tablets. This planning and project management app gives the project manager a visual look at all on-going projects and current status against time and budget. Track man-hours, timesheets, project phases and budget, all in a graphical interface that keeps you connected to the project manager inside MAGNET Enterprise.

MAGNET™ Office



MAGNET Office is a processing, design and drafting software suite that meets the demands of land surveyors and construction contractors. MAGNET Office is available in five versions: Tools, Topo, Layout, Site, and Site with Resurfacing.

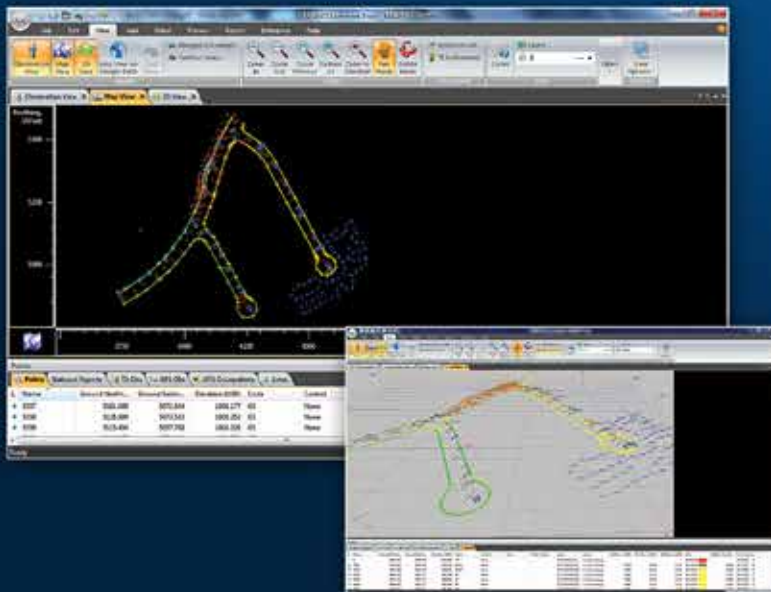
MAGNET Office Tools has advanced data processing and adjustment of total stations, levels, and GNSS raw data. Tools can be installed as a standalone or as an add-on to AutoCAD® products.

MAGNET Office Topo includes drafting and design tools for property plots, subdivisions and land development projects.

MAGNET Office Layout includes the editing and drawing tools required to easily make points from objects and take a building plan into the field for layout.

MAGNET Office Site is a full featured design and drafting tool for any machine control, land development, and road design project.

MAGNET Office Site with Resurfacing includes all the features of Site, but with additional advanced modules for paving and resurfacing analysis and design.



“**MAGNET Office** is great for all our CAD stations. **MAGNET Office Tools** installs directly into **Civil 3D** and I get real-time updates from the field guys.”



Office Versions Compared

	DESCRIPTION	PART #	TOOLS	POST-PROCESSING	OFFICE PRODUCT MAINTENANCE (12 MONTH)	ENTERPRISE TEAM MODULE (12 MONTH)
OFFICE TOOLS	Office Tools	61067	•		•	
	Office Tools + Post Processing	61068	•	•	•	
	Office Tools Solution 12 months	61069	•	•	•	•
	Office Tools Solution 12 months, Renewal	1002774-01	•	•	•	•
	Trade Up to Office Tools Solution 12 months (Only from Topcon Tools)	61070	•	•	•	•
	Upgrade Office Tools to Office Tools Solution 12 months	61159	•	•	•	•
OFFICE TOPO	Office Topo	61071	•		•	
	Office Topo + Post Processing	61072	•	•	•	
	Office Topo Solution 12 months	61073	•	•	•	•
	Office Topo Solution 12 months, Renewal	1002775-01	•	•	•	•
	Trade Up to Office Topo Solution 12 months (Only from SurveyMaster and CivilCAD)	61074	•	•	•	•
	Upgrade Office Topo to Office Topo Solution 12 months	61160	•	•	•	•
OFFICE LAYOUT	Office Layout	1003003-01			•	
	Office Layout Solution	1003004-01			•	•
	Office Layout Solution 12 months, Renewal	1003005-01			•	•
	Trade Up to Office Layout Solution 12 months (Only from Topcon Layout Master)	1003006-01			•	•
OFFICE SITE	Office Site	61075	•		•	
	Office Site + Post Processing	61076	•	•	•	
	Office Site + Resurfacing	61077	•		•	
	Office Site + Resurfacing + Post Processing	61078	•	•	•	
	Office Site Solution 12 months	61079	•	•	•	•
	Office Site Solution 12 months, Renewal	1002776-01	•	•	•	•
	Office Resurfacing Solution 12 months	61080	•	•	•	•
	Office Resurfacing Solution 12 months, Renewal	1002777-01	•	•	•	•
	Trade Up to Office Site Solution 12 months (Only from SiteMaster and CivilCAD)	61081	•	•	•	•
	Trade Up to Office Resurfacing Solution 12 months (Only from SiteMaster with Resurfacing Module)	61161	•	•	•	•
	Upgrade Office Site to Office Site Solution 12 months	61162	•	•	•	•
	Upgrade Office Resurfacing to Office Resurfacing Solution 12 months	61163	•	•	•	•
	Office Product Maintenance 12 months	61156			•	
	ADD-ONS	Add-on Topo Module	61088	•		•
Add-on Post Process Module		61089		•	•	
Add-on Site Module		61091		•	•	
Add-on Resurfacing Module		61092		•	•	

Office Versions Compared

SOFTWARE FEATURE	OFFICE SITE	OFFICE TOPO	OFFICE LAYOUT
Office Tools Included	•	•	
Connection to MAGNET Enterprise	•	•	•
Connection to Sitelink3D	•		
Create and Display Digital Terrain Model (DTM)	•	•	
Create Structure	•	•	•
Place Structure	•	•	•
Deed Entry / Legal Description	•	•	
Description Code Library Mangement	•	•	
Basic CAD Functionality	•	•	•
Advanced CAD Functionality	•	•	
Elevate Points from Text	•		
Export to Pocket3D	•	•	•
File Support *MAGNET Field Job (*.mjf, *.tsj, *.tslv), 3DMC Project File (*.tp3), 3DMC (*.rd3, *.tn3, *.pt3, *.ln3), AutoCAD (dwg, dxf), MicroStation (*.dgn), LandXML (*.xml), GENIO (*.gen, *.crd), Civilcad 5 (*.as5), Civilcad 4 (*.laz, *.asc) Standard Road (*.ali, *.ras, *.sc1), Carlson (*.rd5), Geocomp (*.str), Hayes Data (*.dat), Text Files (*.pts, *.asc, *.xyz, *.csv, *.txt, *.ctf, Topcon (*.gt7, *.gts7), Leica (*.GSI), Nikon (*.ap8, *.raw), Sokkia SDR33 (*.sdr), Trimble/Geodat 5600 (*.job, *.are), Trimble DC10 (*.dc), Wild GRE4 (*.GRE), MX (*.inp)			•
Extend and Trim	•	•	•
Geodetic Calculator	•	•	
Insert - Tables, PDF, Image	•	•	
Insert and Extract Vectors from PDF	•		
Interoperability with MAGNET Office Tools	•	•	
Modify - Convert to Polyline	•	•	
Modify - Edit Strings	•	•	
Modify - Extend/Trim to Boundary	•	•	
Real Time Session from Project Site	•	•	
Report - Duplicate Points / Compare Jobs	•	•	
Seware and Drainage Design	•		
Surface Creation and Management	•	•	
Traverse Adjustment	•	•	•
Volume Computation	•	•	
View Surfaces, Contours & Mesh	•	•	•
Plot to Scale	•	•	•
Cut/Fill Color Map	•	•	

How to purchase

MAGNET software and services are available for sale through MAGNET dealers and distributors, as well as online in the MAGNET Store. Visit **magnet-enterprise.com** and create a free company account to enter the MAGNET Store. Purchase software serial numbers online 24/7.



Subscription or Full Purchase

MAGNET products can be purchased through a license subscription or full purchase. The subscription method allows a more flexible spending plan that can accommodate changes in business activity. In times of expansion, simply purchase a MAGNET subscription for one year. Once that level of activity is proven to be full time, a permanent license can be purchased. MAGNET subscriptions are referred to as a “solution.” Visit the MAGNET Store to see available options.

MAGNET™

For more product information and free trial downloads, visit **MAGNET-Tour.com**.

Google Maps is a registered trademark of Google. Other trademarks and trade names are those of their respective owners. Specifications and functions may change. MAGNET is a registered trademark of Topcon Positioning Systems, Inc. © 2013 Topcon Positioning Systems P/N 7010-2089 Rev. D

DICARLO
SALES - SUPPLIES - REPAIRS - RENTALS
www.dicarlotech.com
410-749-0112